



KYM BEE™
(deflazacort) Tablets

For patients 5 years and older with
Duchenne muscular dystrophy

**KYM BEE™—with the
Promise of Support®
Program—delivers
more than medicine.**

Actor portrayals.

Once prescribed by your healthcare provider, KYM BEE is the only deflazacort backed by Upsher-Smith's comprehensive ***Promise of Support*® Program**—connecting caregivers with a specialized Therapy Care Team to help simplify treatment access and management for the child you love.

Please see Important Safety Information on page 7 and full [Prescribing Information](#).

Understanding Duchenne muscular dystrophy

A Duchenne muscular dystrophy (Duchenne) diagnosis can sometimes feel overwhelming, as families are faced with new information, choices, and care decisions. Understanding the condition can help each step in your journey feel more manageable.



Actor portrayals.

Duchenne is a rare and progressive genetic condition that primarily affects boys.

In the United States, it occurs in up to 1 in 5,000 live male births.

Duchenne is caused by the body's inability to produce enough dystrophin, a protein that helps protect and maintain healthy muscle cells.

Without enough dystrophin, muscles gradually weaken over time.

Muscle damage in Duchenne is often accompanied by chronic inflammation.

Corticosteroids like deflazacort are often prescribed to slow the progression of muscle weakness in Duchenne.

If your child has just been diagnosed, know that you are not alone. Care from specialists, prescribed treatment, and the right support can help make the process feel easier to navigate.

More than medicine—meaningful support

The *Promise of Support*® Program provides resources and assistance to help families manage their child’s deflazacort therapy with KYMBEE™.

Managing Duchenne care can be tough, but feeling informed and supported can help.

KYMBEE is the only deflazacort backed by Upsher-Smith’s comprehensive ***Promise of Support*® Program** to help children with Duchenne get the treatment they need as easily, quickly, and reliably as possible.

KYMBEE (deflazacort) Tablets is a prescription medicine used to treat Duchenne muscular dystrophy (DMD) in patients 5 years of age and older.



Available strengths:
6 mg, 18 mg, 30 mg,
and 36 mg tablets.

Do not take if you have had hypersensitivity, including allergic reactions, to deflazacort (the active ingredient in KYMBEE) or to any of the inactive ingredients in KYMBEE.



If you’re considering a change to your child’s treatment, talk to their healthcare provider to see whether KYMBEE may be the right choice.

Upsher-Smith *Promise of Support*[®] Program

Helping make the treatment journey more manageable

Caring for a child with Duchenne can mean juggling medical decisions, doctor visits, and the everyday routines that keep your family moving. Sometimes stress may also come from insurance decisions, delivery delays, or coverage concerns.

Upsher-Smith is committed to supporting families from day one, with care that goes beyond the prescription. Our program connects caregivers with Patient Care Coordinators who aim to bring empathy and expertise to deflazacort therapy. They coordinate insurance steps, communicate with healthcare providers, and guide families through the treatment journey.



Actor portrayals.



Visit [MyKYM BEE.com](https://www.mykymbee.com) to learn more about the *Promise of Support*[®] Program.

Considering a switch to KYMBEE™?

Whether your child is new to deflazacort therapy or you and your healthcare provider are considering switching from another treatment option, with KYMBEE you'll be connected with a group of **Patient Care Coordinators** experienced with deflazacort therapy.

Our **Promise of Support® Program** is delivered through Orsini, our specialty pharmacy partner, where your Care Team will:



Confirm prescription details with you and your child's healthcare provider



Coordinate free home delivery and offer refill reminders so medication supply arrives on time



Navigate insurance, including prior authorizations, appeal support, and \$0 copay* for eligible commercially insured patients



Provide help in your preferred language, through translation services for caregivers and families



Provide quick access to medication through Quick Start and Bridge Supply as needed to help prevent gaps in therapy



Offer support anytime, with 24/7 access to a pharmacist for personalized help, education, and answers every step of the journey



Explain how to take and store KYMBEE

Once enrolled, someone from the Care Team is available **24 hours a day, 7 days a week**—so help is always just a call away.

*Limitations apply.



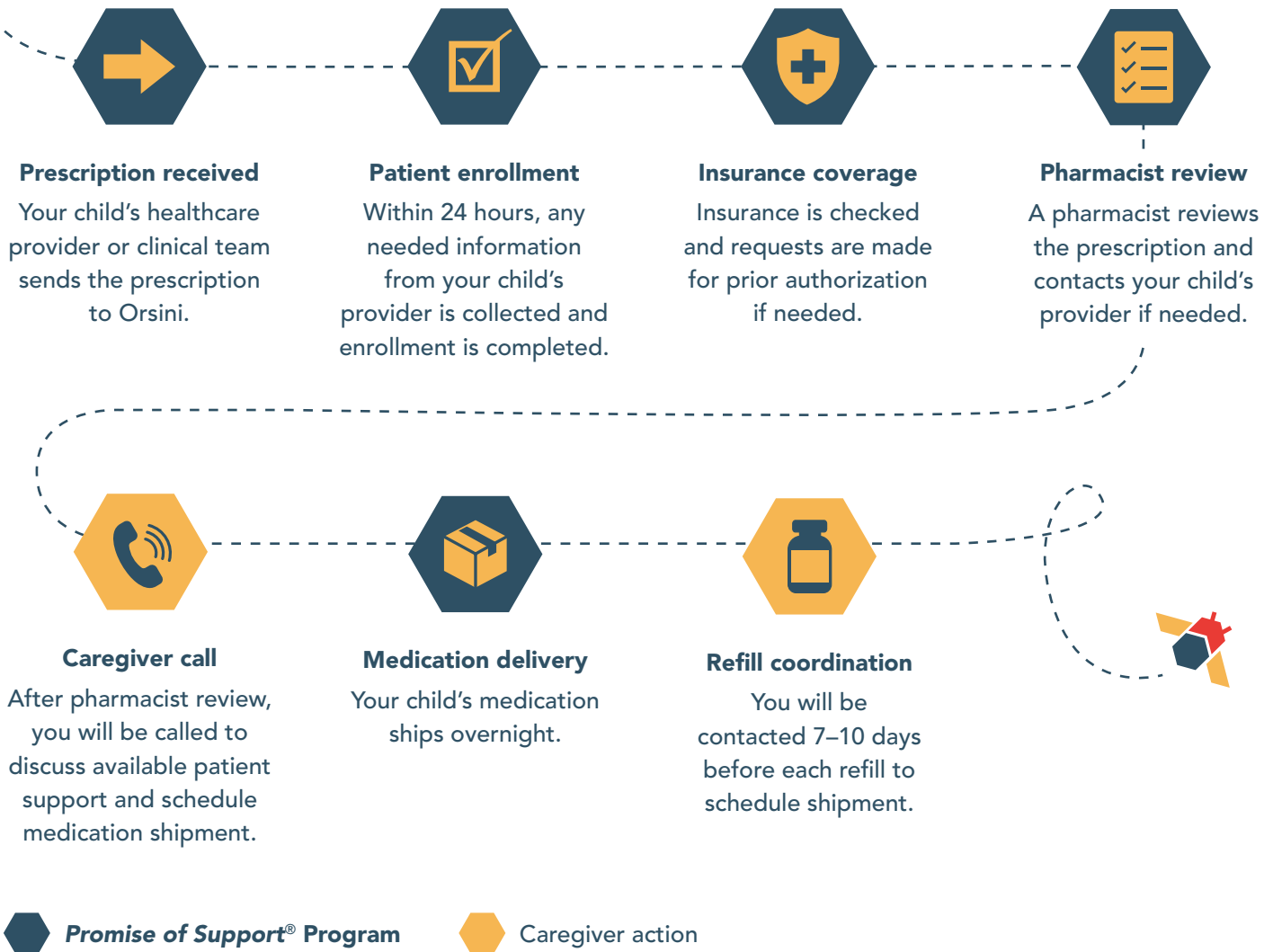
If you're considering a change to your child's treatment, talk to their healthcare provider to see whether KYMBEE may be the right choice.

Getting started with KYMBEE™

You deserve clarity, connection, and guidance throughout the treatment journey.

Here's how the *Promise of Support*® Program works

We manage almost every part of the process for you—from insurance navigation to delivery—so your role is intended to be minimal. You'll need to answer a quick call and confirm your refill schedule.



To learn more about enrolling in our *Promise of Support*® Program for KYMBEE, visit MyKYMBEE.com or talk to your child's healthcare provider.

IMPORTANT SAFETY INFORMATION for KYMBEE™ (deflazacort) Tablets



Who should not take KYMBEE?

Do not take if you have had hypersensitivity, including allergic reactions, to deflazacort (the active ingredient in KYMBEE) or to any of the inactive ingredients in KYMBEE.

What is the most important information I should know about KYMBEE?

- KYMBEE can cause changes in endocrine (hormone) function. Do not stop taking KYMBEE, or change the amount being taken, without first checking with a healthcare provider, as there may be a need for gradual dose reduction to decrease the risk of adrenal insufficiency and steroid "withdrawal syndrome." Acute adrenal insufficiency can occur if corticosteroids, including KYMBEE, are withdrawn abruptly, and can be life threatening. A steroid "withdrawal syndrome" may also occur following abrupt discontinuance of corticosteroids. For patients already taking corticosteroids during times of stress, the amount of KYMBEE prescribed may need to be increased.
- There is an increased risk of infection when taking KYMBEE. Tell a healthcare provider if the patient has had recent or ongoing infections or if they have recently received a vaccine. Seek medical advice immediately if the patient develops fever or other signs of infection. Some infections can potentially be severe and life threatening. Patients should avoid exposure to chickenpox or measles and alert their healthcare provider immediately if they are exposed.
- KYMBEE can cause an increase in blood pressure and water retention. If this occurs, dietary salt restriction and potassium therapy may be needed.
- There is an increased risk of developing a hole in the stomach or intestines in patients with certain gastrointestinal disorders when taking corticosteroids like KYMBEE.
- KYMBEE can cause behavior and mood changes that can be severe. Seek medical attention if any behavioral or mood changes develop.
- There is a risk of osteoporosis with prolonged use of KYMBEE, which can lead to fractures in the spine and in long bones.
- KYMBEE may cause cataracts or glaucoma. A healthcare provider should monitor for these conditions if therapy is continued for more than 6 weeks.

- Immunizations should be up-to-date according to immunization guidelines prior to starting therapy with KYMBEE. Live attenuated or live vaccines should be administered at least 4 to 6 weeks prior to starting KYMBEE. Live attenuated or live vaccines should not be used in patients taking KYMBEE.
- KYMBEE can cause serious skin rashes. Seek medical attention at the first sign of a rash.
- Rare instances of anaphylaxis, a severe allergic reaction, have occurred in patients receiving corticosteroid therapy, including KYMBEE.

Before taking KYMBEE, tell a healthcare provider about all medical conditions, including if the patient:

- is pregnant or planning to become pregnant. KYMBEE can harm an unborn baby.
- is breastfeeding or planning to breastfeed. KYMBEE may appear in breastmilk and could affect a nursing child.

Certain medications can cause an interaction with KYMBEE. Tell a healthcare provider about all the medicines you are taking, including over-the-counter medicines (such as insulin, aspirin or other non-steroidal anti-inflammatory drugs), dietary supplements, and herbal products. Alternate treatment, dosage adjustment, and/or special test(s) may be needed during the treatment.

What are the side effects of KYMBEE?

The most common side effects include: facial puffiness or Cushingoid appearance, weight increased, increased appetite, upper respiratory tract infection, cough, frequent daytime urination, unwanted hair growth, abdominal obesity, and colds. These are not all of the possible side effects. Call a healthcare provider for medical advice about side effects.

This safety information is not comprehensive. Please see the full [Prescribing Information](#) for more information on KYMBEE. You can also visit www.upsher-smith.com or call 1-888-650-3789.

You are encouraged to report suspected adverse reactions to the FDA by visiting www.fda.gov/medwatch or by calling 1-800-FDA-1088.

What is KYMBEE?

KYM BEE (deflazacort) Tablets are a prescription medicine used to treat Duchenne muscular dystrophy (DMD) in patients 5 years of age and older.



Through the **Promise of Support® Program**, Upsher-Smith provides step-by-step help, so your child receives their medication as quickly and reliably as possible, along with continued assistance around insurance, pharmacy coordination, and everyday treatment needs.



Ready to begin the KYMBEE™ journey?

We're here to help you take the next step

The Upsher-Smith **Promise of Support® Program** is here to assist you throughout your child's treatment journey.

Support includes:

- Expert help with benefits investigation and coverage navigation
- 24/7 access to a pharmacist for personalized help
- Assistance with prior authorization and appeals
- \$0 copay* for eligible commercially insured patients
- Quick Start and Bridge programs for therapy continuity
- Free home delivery and medication refill reminders

Talk to your healthcare professional about whether KYMBEE may be right for your child.



KYM BEE (deflazacort) Tablets is a prescription medicine used to treat Duchenne muscular dystrophy (DMD) in patients 5 years of age and older.



Manufactured in the USA.†

Upsher-Smith, a trusted U.S.-based pharmaceutical company, delivers consistent supply and industry-leading support.

*Limitations apply.

†Sourced using components from Italy.

Please see Important Safety Information on page 7 and full [Prescribing Information](#).

UPSHER-SMITH

KYM BEE and Promise of Support are trademarks of Upsher-Smith Laboratories, LLC.

All other trademarks are property of their respective owners.

© 2026 Upsher-Smith Laboratories, LLC, 6701 Evenstad Drive, Suite 300, Maple Grove, MN 55369

PM-003557.01 02/26